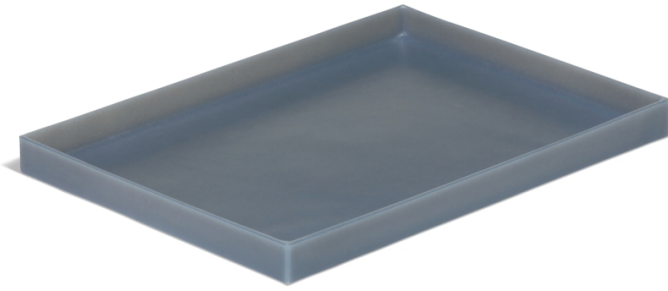


Poly Utility Tray

PAK656 Plastic, 10.75" x 15" x 1", Sump Capacity 0.5 gal.

Flat-bottom poly trays are the economical way to store small parts. Great for lining your benches and shelving.

- Light-colored, flat-bottom design makes it easy to see screws, springs and other small parts
- All-poly construction resists most chemicals; will not rust or corrode
- Rotationally molded spill tray is ideal for applications that would compromise injected or thermoformed trays
- Square modular design allows efficient use of space on bench or shelves for process parts
- Made from FDA-compliant resins for containment of food and cosmetic products



Specifications

Sump Capacity Range	0 - 0.9 gal.
Style	Standard
Dimensions	10.75" W x 15" L x 1" H
Sump Capacity	.5 gal.
Brand	Bayhead Products
Interior Bottom Dimensions	14.75" L x 10.5" W
Color	Gray
Solution	Tray
Tray Type	Plastic
Sold as	1 each
Weight	1 lb.
Composition	Polyethylene
UNSPSC	24111812
Pigalog® Page Number	Page 378

Metric Equivalent

Sump Capacity	1.9 L
Weight	.5 kg
Dimensions	27cm W x 38cm L x 2.5cm H

Technical Information

Technical Documents

LDPE Products



One Pork Avenue • Tipton, PA 16684-0304

1-855-493-4647 • Fax: 1-800-621-7447 • newpig.com • hothogs@newpig.com